

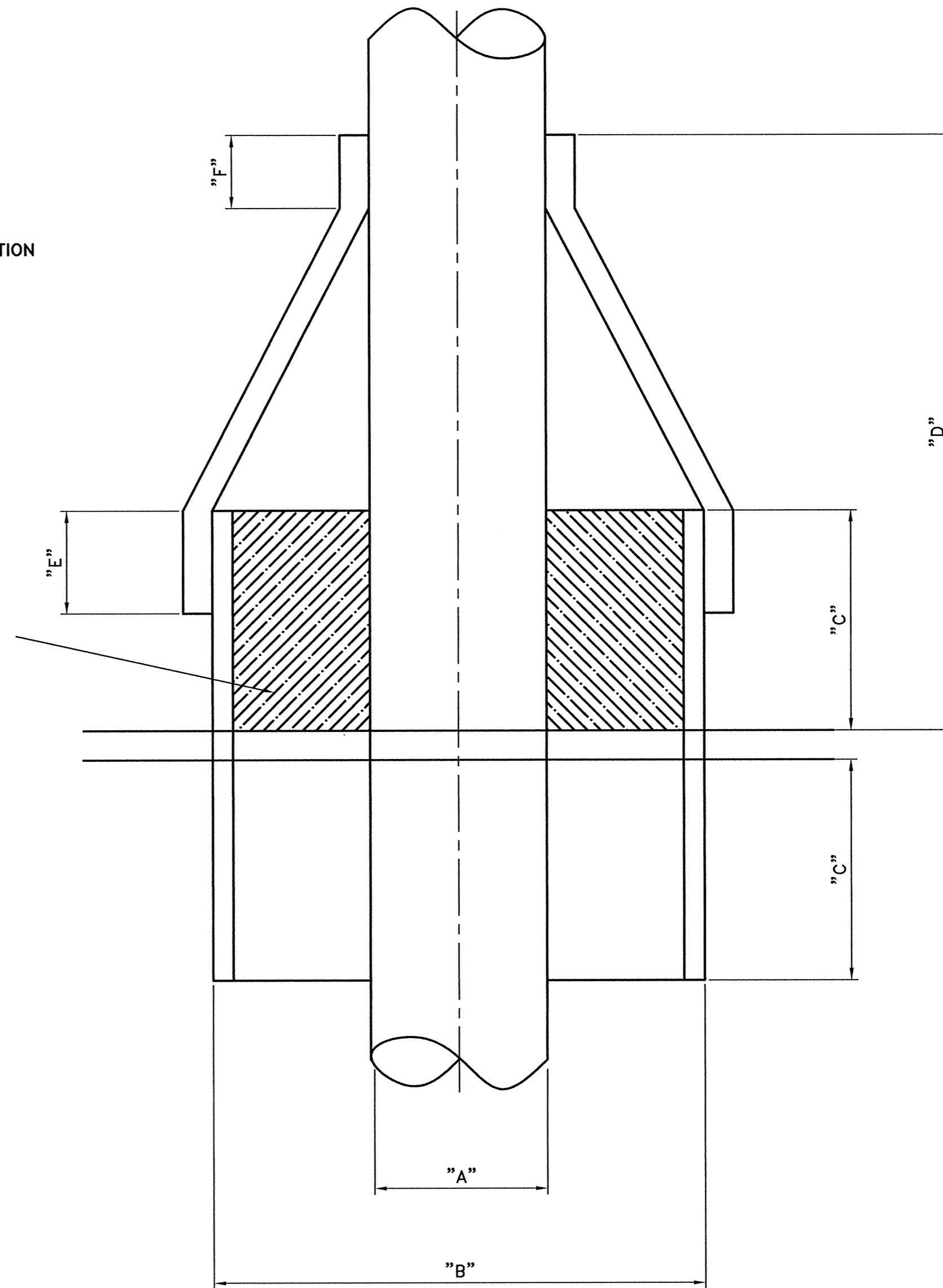
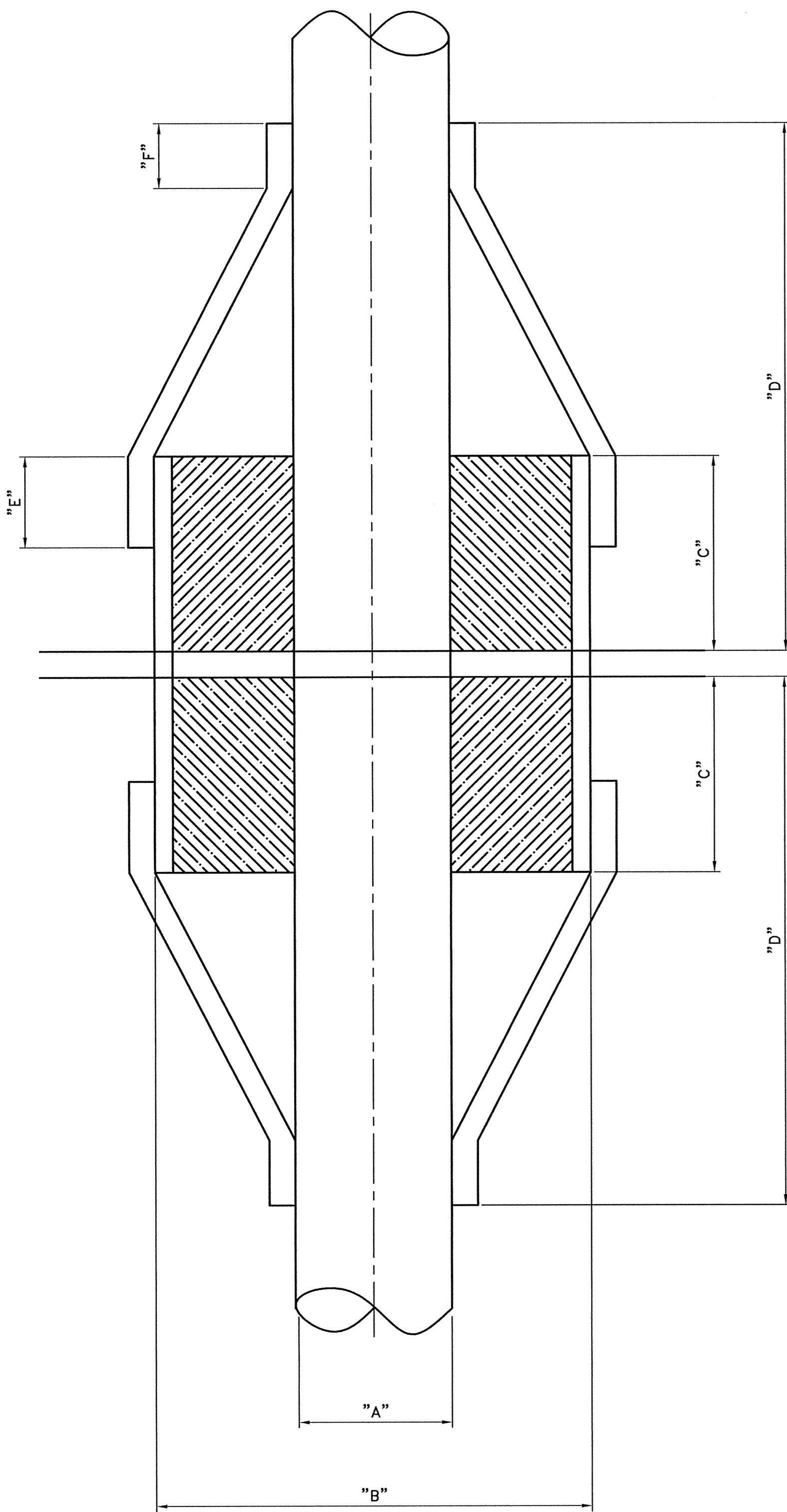
MEGGITT POLYMER SOLUTIONS, ASHBY ROAD, SHEFFIELD, LOVESHAMPOUR, LEICESTERSHIRE, ENGLAND, LE12 9EQ.
THE INFORMATION CONTAINED IN THIS DOCUMENT IS PROPERTY AND PROPRIETARY INFORMATION OF MEGGITT AEROSPACE LIMITED TRADING AS MEGGITT POLYMER SOLUTIONS AND IS DISCLOSED STRICTLY IN CONFIDENCE. IT MUST NOT BE USED, DISCLOSED TO OTHERS OR REPRODUCED WITHOUT THE EXPRESS WRITTEN CONSENT OF MEGGITT POLYMER SOLUTIONS. IF CONSENT IS GIVEN FOR REPRODUCTION IN WHOLE OR IN PART, THIS NOTICE AND ANY NOTICE SET FORTH WITHIN THE DOCUMENT SHALL APPEAR IN ANY SUCH WHOLE OR PARTIAL REPRODUCTION.

| ITEM | QTY | DESCRIPTION | MAT'L |
|------|-----|-------------|-------|
| | | | |

DOUBLE PENETRATION ARRANGEMENT

SINGLE PENETRATION ARRANGEMENT

FOR SINGLE PENETRATION A0-HO INSULATION PACK WITH 128Kg/M3 CERAMIC FIBROUS INSULATION.
FOR DOUBLE PENETRATION REPEAT ABOVE AND BELOW FOR DECK OR BLAST WALL



| PIPE SIZE | DIMENSION "A" PIPE SIZE OUTSIDE DIA | SLEEVE SIZE | DIMENSION "B" SLEEVE SIZE OUTSIDE DIA | DIMENSION "C" MINIMUM | DIMENSION "D" MINIMUM | DIMENSION "E" FOR SLEEVE CLAMPING | DIMENSION "F" FOR PIPE CLAMPING | SEAL HEIGHT "G" |
|-----------|-------------------------------------------|-------------|---------------------------------------------|--------------------------|--------------------------|-----------------------------------------|---------------------------------------|-----------------|
| 3/4" | 1.05"(26.7mm) | 4" | 4.5"(114.3mm) | 40mm | 167mm | 25mm | 25mm | 152mm |
| 1" | 1.315"(33.4mm) | 6" | 6.625"(168.3mm) | 40mm | 167mm | 25mm | 25mm | 152mm |
| 1 1/2" | 1.9"(48.3mm) | 6" | 6.625"(168.3mm) | 40mm | 167mm | 25mm | 25mm | 152mm |
| 2" | 2.3755"(60.3mm) | 6" | 6.625"(168.3mm) | 40mm | 167mm | 25mm | 25mm | 152mm |
| 3" | 3.5"(88.9mm) | 8" | 8.625"(219.1mm) | 40mm | 167mm | 25mm | 25mm | 152mm |
| 4" | 4.5"(114.3mm) | 8" | 8.625"(219.1mm) | 40mm | 167mm | 25mm | 25mm | 152mm |
| 5" | 5.563"(141.3mm) | 8" | 8.625"(219.1mm) | 40mm | 167mm | 25mm | 25mm | 152mm |
| 6" | 6.625"(168.3mm) | 12" | 12.75"(323.9mm) | 75mm | 167mm | 25mm | 25mm | 152mm |
| 8" | 8.625"(219.1mm) | 14" | 14"(355.67mm) | 75mm | 228mm | 50mm | 25mm | 203mm |
| 10" | 10.75"(273.1mm) | 16" | 16"(406.4mm) | 75mm | 228mm | 50mm | 25mm | 203mm |
| 12" | 12.75"(323.9mm) | 18" | 18"(457.2mm) | 75mm | 279mm | 50mm | 25mm | 254mm |
| 14" | 14"(355.67mm) | 20" | 20"(508mm) | 75mm | 279mm | 50mm | 50mm | 254mm |
| 16" | 16"(406.4mm) | 24" | 24"(609.6mm) | 75mm | 279mm | 50mm | 50mm | 254mm |
| 18" | 18"(457.2mm) | 28" | 28"(711.2mm) | 75mm | 279mm | 50mm | 50mm | 254mm |
| 20" | 20"(508mm) | 28" | 28"(711.2mm) | 75mm | 279mm | 50mm | 50mm | 254mm |
| 24" | 24"(609.6mm) | 32" | 32"(812.8mm) | 75mm | 279mm | 50mm | 50mm | 254mm |
| 30" | 30"(762mm) | 36" | 36"(914.4mm) | 75mm | 279mm | 50mm | 50mm | 254mm |

CLIPPING LENGTHS OF SEAL AS PER DIMENSIONS "E" & "F" ACCOMMODATE THE USE OF SINGLE BAND CLAMP APPLICATIONS UP TO 350mm DIAMETER OVER PIPES AND SLEEVES WITH DOUBLE CLAMPING APPLIED FOR DIAMETERS OF PIPES AND SLEEVES OVER 350mm.

SEAL MOVEMENT $\begin{matrix} \text{"Z"} \\ \swarrow \quad \searrow \\ \text{"X"} \quad \text{"Y"} \end{matrix}$ 25mm (MAX) IN "X", "Y" & "Z" AXIS

NOTE THAT SEAL IS TO BE COMPRESSED BY 25mm IN "Z" AXIS WHEN INSTALLED

FOR REQUIREMENTS WHERE MORE THAN 25mm IN ANY DIRECTION ARE REQUIRED IT WILL BE NECESSARY TO INCREASE THE OVERALL HEIGHT OF THE SEAL. IN THESE CASES PLEASE CONSULT WITH BESTOBELL OILFIELD PRODUCTS GIVING MAXIMUM HEIGHT AVAILABLE FOR SEAL AND ANY OTHER CONSTRICTING DIMENSIONS.

FOR PIPE SIZES NOT INCLUDED IN THE TABLE PLEASE CONTACT BESTOBELL OILFIELD PRODUCT FOR FURTHER INFORMATION

| | | | |
|---|----------------|-------------|----|
| 1 | 21 02 11 | FIRST ISSUE | MW |
|---|----------------|-------------|----|

COMPUTER AIDED DRAWING
NO MANUAL ALTERATION

TOLERANCES
±3 mm

IF IN DOUBT ASK
DO NOT SCALE

ALL DIMENSIONS ARE IN MILLIMETRES
UNLESS OTHERWISE STATED

CUSTOMER DRAWING NUMBER N/A

Export Control Standard
CI Number N/A
Technology N/A
Released by M.Viddowson

GENERIC LAYOUT FOR A0-HO FIRE SEALS
DRAWING NUMBER
SHEET 1 of 1
BFT1500 AAA